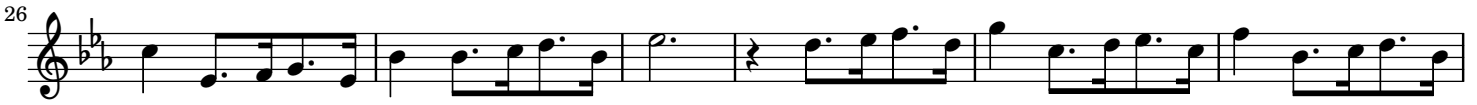


**IV.**  
**from Partita No. 6**

Georg Philipp Telemann (1681–1767)  
TWV 41:Es1

Tempo di Ciaccona (♩ = 108)



**IV.**  
**from Partita No. 6**

Georg Philipp Telemann (1681–1767)  
TWV 41:Es1

Tempo di Ciaccona (♩ = 108)

Measures 1-8 of the piece. The score is in 3/4 time with a key signature of two flats (B-flat and E-flat). The flute part begins with a quarter rest, followed by eighth-note patterns. The piano accompaniment features a steady eighth-note bass line and chords in the right hand.

Measures 9-17. The flute part continues with eighth-note patterns and includes a trill (tr) in measure 15. The piano accompaniment maintains the eighth-note bass line and provides harmonic support with chords.

Measures 18-26. The flute part features a trill (tr) in measure 25. The piano accompaniment continues with the eighth-note bass line and chords.

Measures 27-36. The flute part includes a trill (tr) in measure 35. The piano accompaniment continues with the eighth-note bass line and chords.

Measures 37-44. The flute part includes a trill (tr) in measure 43. The piano accompaniment continues with the eighth-note bass line and chords, ending with a final cadence.