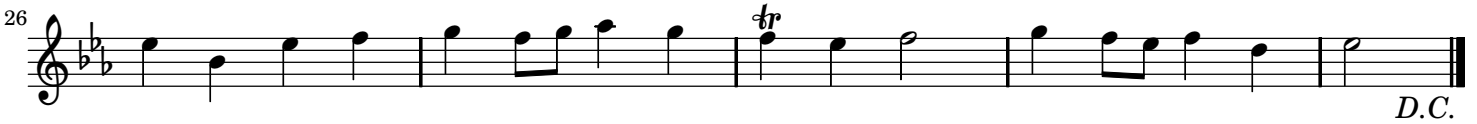
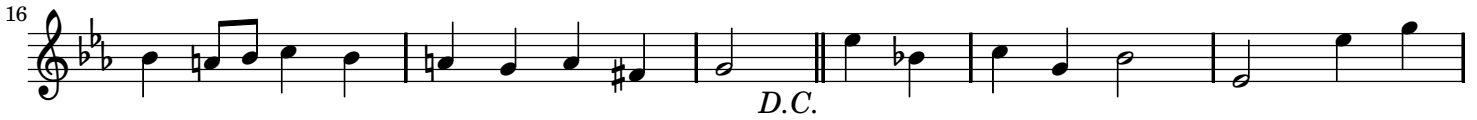
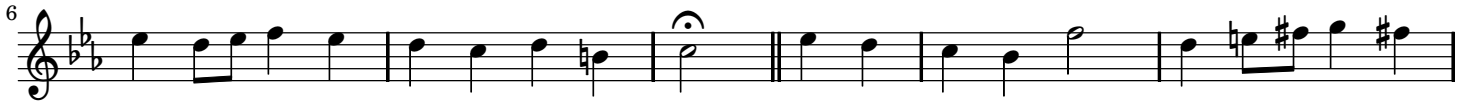


II.
from Partita No. 3

Georg Philipp Telemann (1681–1767)
TWV 41:c1

Presto (♩ = 192)



II.
from Partita No. 3

Georg Philipp Telemann (1681–1767)
TWV 41:c1

Presto (♩ = 192)

Measures 1-5 of the piece. The flute part begins with a series of eighth notes, while the piano accompaniment consists of chords and a steady bass line.

Measures 6-11. Measure 6 starts with a repeat sign. The flute part has some chromatic movement, and the piano accompaniment features a prominent bass line with a half note in measure 7.

Measures 12-17. The flute part continues with eighth-note patterns. The piano accompaniment has a more active bass line with eighth notes.

Measures 18-23. Measure 18 starts with a repeat sign. The flute part has a melodic line with some grace notes. The piano accompaniment features chords and a steady bass line. The text "D.C." is written below the piano part.

Measures 24-29. Measure 24 starts with a repeat sign and a trill (tr) in the flute part. The piano accompaniment has a steady bass line. The text "D.C." is written below the piano part at the end of the system.