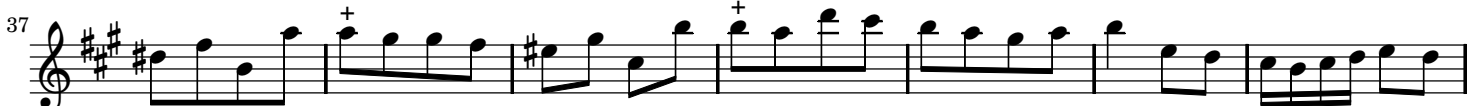
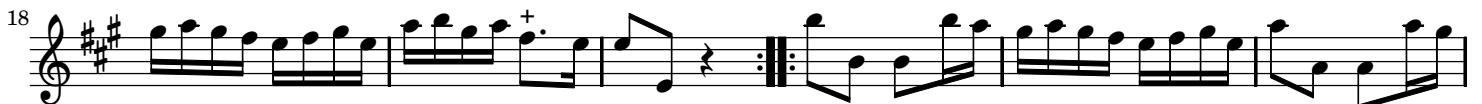


**IV.**  
**from Sonata No. 1 in A major**

Jacques-Christophe Naudot (1690–1762)  
Op. 1, No. 1

**Vivement** (♩ = 108)



# IV.

from Sonata No. 1 in A major

Jacques-Christophe Naudot (1690–1762)  
Op. 1, No. 1

Vivement (♩ = 108)

Measures 1-6 of the piece. The music is in A major (three sharps) and 2/4 time. The first staff (treble clef) begins with a quarter rest, followed by eighth-note patterns. The second staff (bass clef) starts with a quarter rest, followed by eighth-note patterns.

Measures 7-12. The first staff continues with eighth-note patterns, and the second staff provides a rhythmic accompaniment with eighth notes.

Measures 13-18. The first staff features more complex eighth-note patterns, while the second staff continues with a steady eighth-note accompaniment.

Measures 19-25. Measure 19 includes a repeat sign. Measure 20 has a '+' above the first eighth note. Measure 25 ends with a repeat sign.

Measures 26-33. Measure 26 has a '+' above the first eighth note. Measure 33 has a '+' above the first eighth note.

Measures 34-41. Measure 34 has a '+' above the first eighth note. Measure 35 has a '+' above the first eighth note. Measure 36 has a '+' above the first eighth note. Measure 37 has a '+' above the first eighth note. Measure 38 has a '+' above the first eighth note.

Measures 42-48. Measure 42 has a '+' above the first eighth note. The piece concludes with a double bar line and repeat dots.