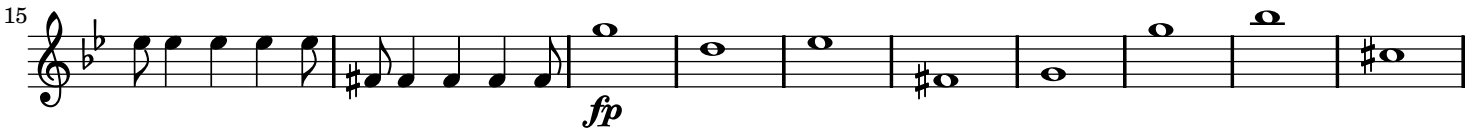


Symphony No. 25

Wolfgang Amadeus Mozart (1756–1791)

K. 183

Allegro con brio (♩ = 144)



65 

70 

75 

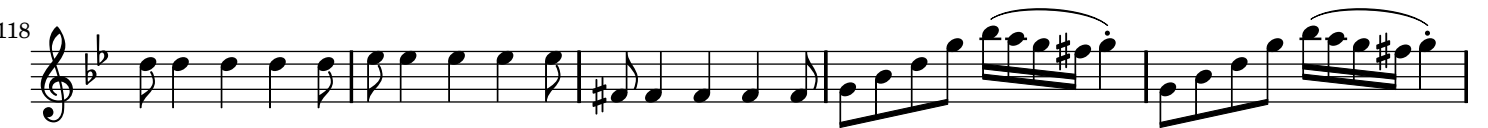
82 

89 

96 

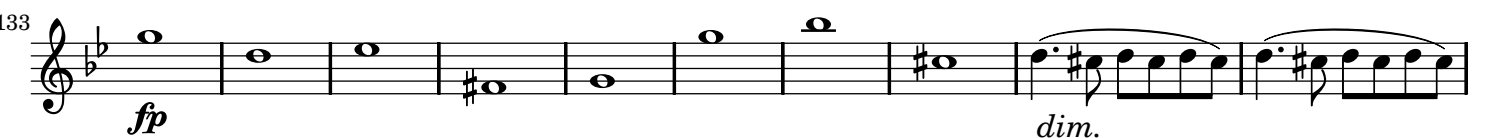
106 

112 

118 

123 

127 

133 

143  Musical notation for measures 143-150. The key signature is B-flat major. Measure 143 starts with a piano (*pp*) dynamic. Measure 144 has a rest. Measure 145 starts with a forte (*f*) dynamic. The notation includes quarter notes, eighth notes, and sixteenth notes.

151  Musical notation for measures 151-156. The key signature changes to B-flat major with a sharp (F#). The notation includes eighth notes and sixteenth notes.

157  Musical notation for measures 157-162. The key signature is B-flat major with a sharp (F#). The notation includes eighth notes and sixteenth notes.

163  Musical notation for measures 163-169. The key signature is B-flat major with a sharp (F#). The notation includes eighth notes and sixteenth notes.

170  Musical notation for measures 170-176. The key signature is B-flat major with a sharp (F#). The notation includes eighth notes and sixteenth notes.

177  Musical notation for measures 177-181. The key signature is B-flat major with a sharp (F#). Measure 177 starts with a piano (*p*) dynamic. The notation includes eighth notes and sixteenth notes.

182  Musical notation for measures 182-186. The key signature is B-flat major with a sharp (F#). Measure 182 starts with a forte (*f*) dynamic. The notation includes eighth notes and sixteenth notes.

187  Musical notation for measures 187-191. The key signature is B-flat major with a sharp (F#). The notation includes eighth notes and sixteenth notes.

192  Musical notation for measures 192-196. The key signature is B-flat major with a sharp (F#). The notation includes eighth notes and sixteenth notes.

197  Musical notation for measures 197-202. The key signature is B-flat major with a sharp (F#). The notation includes eighth notes and sixteenth notes.

203  Musical notation for measures 203-208. The key signature is B-flat major with a sharp (F#). The notation includes eighth notes and sixteenth notes.

209  Musical notation for measures 209-214. The key signature is B-flat major with a sharp (F#). The notation includes eighth notes and sixteenth notes.