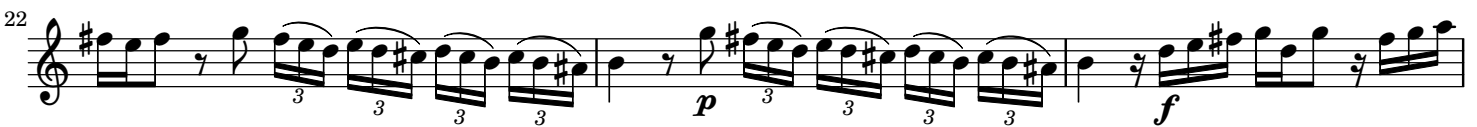


I.
from Flute Sonata No. 12 in G major

Pietro Antonio Locatelli (1695–1764)
Op. 2, No. 12

Largo (♩ = 48)



I.
from Flute Sonata No. 12 in G major

Pietro Antonio Locatelli (1695–1764)
Op. 2, No. 12

Largo (♩ = 48)

Measures 1-3 of the piece. The music is in G major and common time. The first staff (treble clef) features a melodic line with eighth-note patterns and a trill in measure 3. The second staff (bass clef) provides a harmonic accompaniment with eighth-note patterns.

Measures 4-6. The melodic line continues with eighth-note patterns and rests. The bass line continues with eighth-note accompaniment.

Measures 7-9. The melodic line features eighth-note patterns and rests. The bass line continues with eighth-note accompaniment.

Measures 10-12. Measure 10 contains a triplet of eighth notes in the treble staff. Measure 11 has a piano (*p*) dynamic marking. Measure 12 has a forte (*f*) dynamic marking. The bass line continues with eighth-note accompaniment.

Measures 13-15. The melodic line continues with eighth-note patterns and rests. The bass line continues with eighth-note accompaniment.

Measures 16-18. Measure 16 has a trill (*tr*) in the treble staff. The melodic line continues with eighth-note patterns and rests. The bass line continues with eighth-note accompaniment.

19

Trill

22

p *f*

25

28

31

p

34

f