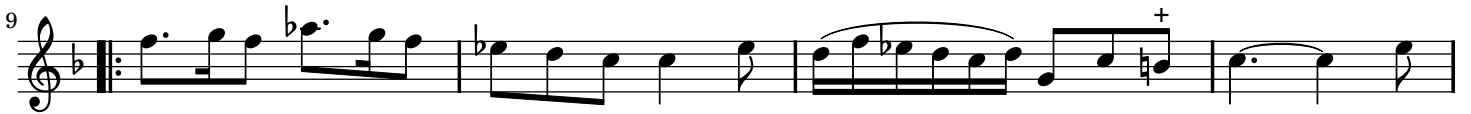


# Ciciliana

from Flute Sonata No. 4

Michel Blavet (1700–1768)  
Op. 2, No. 4

♩. = 40



# Ciciliana

from Flute Sonata No. 4

Michel Blavet (1700–1768)  
Op. 2, No. 4

♩. = 40

Measures 1-4 of the piece. The music is in 6/8 time with a key signature of one flat (B-flat). The first staff is the treble clef and the second is the bass clef. Measure 1 starts with a repeat sign. Measures 2 and 3 contain eighth-note patterns in the treble and dotted eighth notes in the bass. Measure 4 features a sixteenth-note run in the treble and a dotted quarter note in the bass.

Measures 5-8 of the piece. Measure 5 begins with a five-measure rest in the treble. Measures 6 and 7 continue with eighth-note patterns in the treble and dotted eighth notes in the bass. Measure 8 ends with a repeat sign.

Measures 9-14 of the piece. Measures 9 and 10 feature eighth-note patterns in the treble and dotted eighth notes in the bass. Measures 11 and 12 continue with similar patterns. Measures 13 and 14 end with a repeat sign.

Measures 15-18 of the piece. Measures 15 and 16 feature eighth-note patterns in the treble and dotted eighth notes in the bass. Measures 17 and 18 continue with similar patterns.

Measures 19-23 of the piece. Measures 19 and 20 feature eighth-note patterns in the treble and dotted eighth notes in the bass. Measures 21 and 22 continue with similar patterns. Measure 23 ends with a repeat sign.

Measures 24-28 of the piece. Measures 24 and 25 feature eighth-note patterns in the treble and dotted eighth notes in the bass. Measures 26 and 27 continue with similar patterns. Measure 28 ends with a repeat sign and two endings. Ending 1 is a quarter note followed by a repeat sign. Ending 2 is a quarter note followed by a repeat sign.