

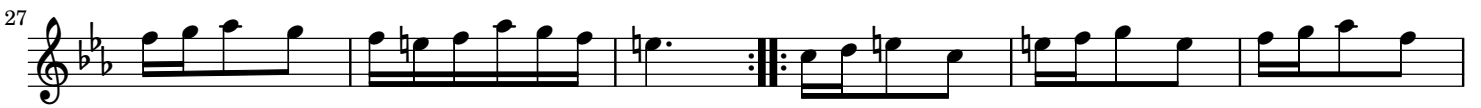
II.

from Recorder Sonata No. 11 in F minor

Paolo Benedetto Bellinzani (1682–1757)

Op. 3, No. 11

$\text{♩} = 66$



II.

from Recorder Sonata No. 11 in F minor

Paolo Benedetto Bellinzani (1682–1757)

Op. 3, No. 11

♩. = 66

Measures 1-7 of the piece. The music is in F minor (two flats) and 3/8 time. The treble clef part features a melodic line with eighth and sixteenth notes, while the bass clef part provides a rhythmic accompaniment with eighth notes.

Measures 8-15. The melodic line continues with more complex rhythmic patterns, including some sixteenth-note runs. The bass line remains steady with eighth notes.

Measures 16-23. The piece continues with similar rhythmic motifs. A repeat sign is visible at the end of measure 23.

Measures 24-31. This section includes a repeat sign at the beginning of measure 24 and ends with a double bar line and repeat sign at the end of measure 31.

Measures 32-39. The melodic line shows some chromatic movement, and the bass line continues with eighth-note accompaniment.

Measures 40-47. The piece features more intricate melodic passages in the treble clef, with the bass line providing a consistent rhythmic foundation.

Measures 48-55. The melodic line becomes more active with sixteenth-note patterns. The bass line includes some rests and eighth notes.

Measures 56-63. The final section of the piece, ending with a double bar line and repeat sign. The melodic line concludes with a series of eighth notes.