

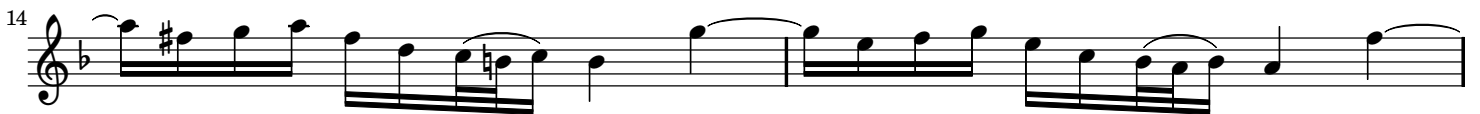
# I. Grave Adagio

from *Trattenimenti armonici*, Sonata No. 4 in D minor

Tomaso Albinoni (1671–1751)

Op. 6, No. 4

Grave Adagio (♩ = 48)



# I. Grave Adagio

from *Trattenimenti armonici*, Sonata No. 4 in D minor

Tomaso Albinoni (1671–1751)

Op. 6, No. 4

Grave Adagio (♩ = 48)

Measures 1-3 of the piece. The music is in D minor, 3/4 time. The first measure features a half note G4 in the treble and a half note F4 in the bass. The second measure has a half note A4 in the treble and a half note G4 in the bass. The third measure has a half note B4 in the treble and a half note A4 in the bass.

Measures 4-6 of the piece. Measure 4 has a half note C5 in the treble and a half note B4 in the bass. Measure 5 has a half note B4 in the treble and a half note A4 in the bass. Measure 6 has a half note A4 in the treble and a half note G4 in the bass.

Measures 7-10 of the piece. Measure 7 has a half note G4 in the treble and a half note F4 in the bass. Measure 8 has a half note F4 in the treble and a half note E4 in the bass. Measure 9 has a half note E4 in the treble and a half note D4 in the bass. Measure 10 has a half note D4 in the treble and a half note C4 in the bass.

Measures 11-13 of the piece. Measure 11 has a half note C4 in the treble and a half note B3 in the bass. Measure 12 has a half note B3 in the treble and a half note A3 in the bass. Measure 13 has a half note A3 in the treble and a half note G3 in the bass.

Measures 14-16 of the piece. Measure 14 has a half note G3 in the treble and a half note F3 in the bass. Measure 15 has a half note F3 in the treble and a half note E3 in the bass. Measure 16 has a half note E3 in the treble and a half note D3 in the bass.

Measures 17-19 of the piece. Measure 17 has a half note D3 in the treble and a half note C3 in the bass. Measure 18 has a half note C3 in the treble and a half note B2 in the bass. Measure 19 has a half note B2 in the treble and a half note A2 in the bass.