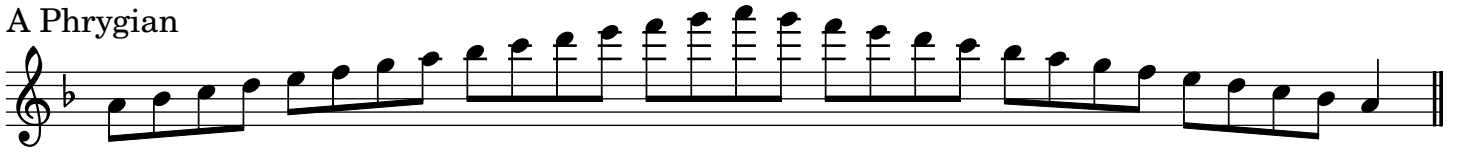


# Phrygian Scales

E Phrygian



A Phrygian



D Phrygian



G Phrygian



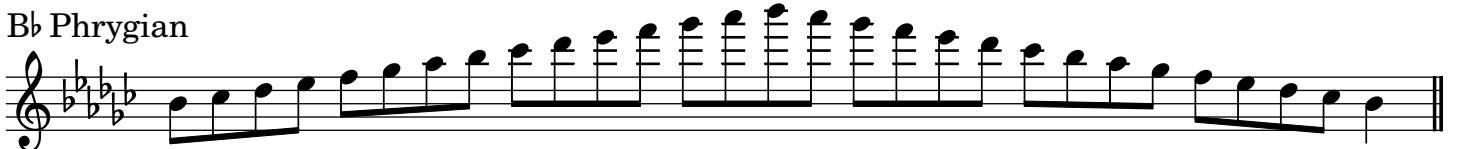
C Phrygian



F Phrygian



B $\flat$  Phrygian



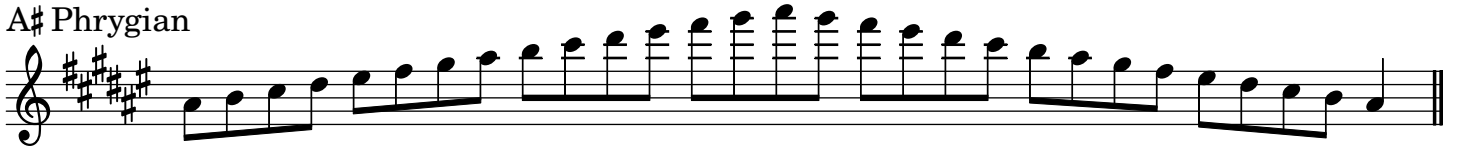
E $\flat$  Phrygian



E# Phrygian



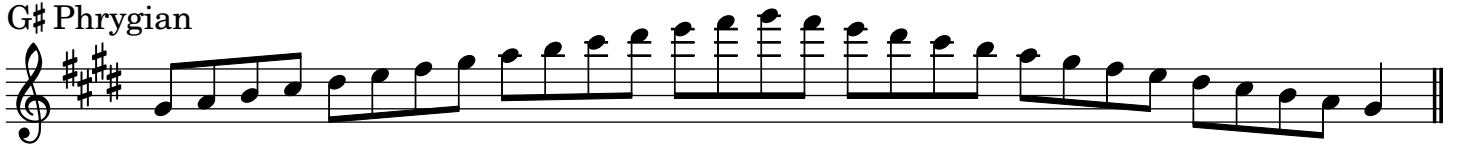
A# Phrygian



D# Phrygian



G# Phrygian



C# Phrygian



F# Phrygian



B Phrygian

