

Chromatic Scales

C chromatic

Musical notation for the C chromatic scale. It consists of three staves. The first staff shows the scale in a single line, starting on middle C and moving up chromatically to C5. The second staff shows the scale in a single line, starting on C4 and moving down chromatically to C3. The third staff shows the scale in a single line, starting on C4 and moving down chromatically to C3, with a final double bar line.

D \flat chromatic

Musical notation for the D \flat chromatic scale. It consists of three staves. The first staff shows the scale in a single line, starting on D \flat 4 and moving up chromatically to D \flat 5. The second staff shows the scale in a single line, starting on D \flat 4 and moving down chromatically to D \flat 3. The third staff shows the scale in a single line, starting on D \flat 4 and moving down chromatically to D \flat 3, with a final double bar line.

D chromatic

Musical notation for the D chromatic scale. It consists of three staves. The first staff shows the scale in a single line, starting on D4 and moving up chromatically to D5. The second staff shows the scale in a single line, starting on D4 and moving down chromatically to D3. The third staff shows the scale in a single line, starting on D4 and moving down chromatically to D3, with a final double bar line.

E \flat chromatic

Two staves of musical notation for the E \flat chromatic scale. The first staff shows the ascending scale: E \flat , F, F \sharp , G, G \flat , A, A \flat , B, B \sharp , C, C \flat , D, D \sharp , E \flat . The second staff shows the descending scale: E \flat , D \sharp , D, C \sharp , C, B \sharp , B, A \sharp , A, G \sharp , G, F \sharp , F, E \flat .

E chromatic

Two staves of musical notation for the E chromatic scale. The first staff shows the ascending scale: E, F, F \sharp , G, G \flat , A, A \flat , B, B \sharp , C, C \flat , D, D \sharp , E. The second staff shows the descending scale: E, D \sharp , D, C \sharp , C, B \sharp , B, A \sharp , A, G \sharp , G, F \sharp , F, E.

F chromatic

Two staves of musical notation for the F chromatic scale. The first staff shows the ascending scale: F, F \sharp , G, G \flat , A, A \flat , B, B \sharp , C, C \flat , D, D \sharp , E, E \flat , F. The second staff shows the descending scale: F, E \flat , E, D \flat , D, C \flat , C, B \flat , B, A \flat , A, G \flat , G, F.

F \sharp chromatic

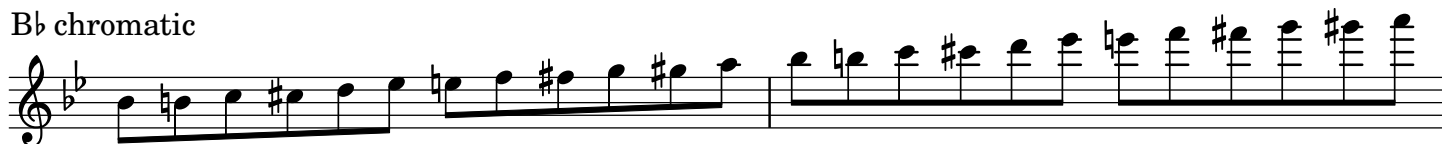
Two staves of musical notation for the F \sharp chromatic scale. The first staff shows the ascending scale: F \sharp , G, G \flat , A, A \flat , B, B \sharp , C, C \flat , D, D \sharp , E, E \flat , F \sharp . The second staff shows the descending scale: F \sharp , E \flat , E, D \flat , D, C \flat , C, B \flat , B, A \flat , A, G \flat , G, F \sharp .

G chromatic

Two staves of musical notation for the G chromatic scale. The first staff shows the ascending scale: G, G \sharp , A, A \flat , B, B \sharp , C, C \flat , D, D \sharp , E, E \flat , F, F \sharp , G. The second staff shows the descending scale: G, F \sharp , F, E \flat , E, D \flat , D, C \flat , C, B \flat , B, A \flat , A, G.

A \flat chromatic

A chromatic

B \flat chromatic

B chromatic

