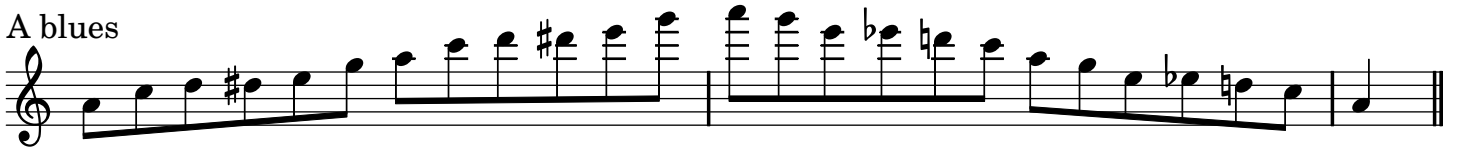


# Blues Scales

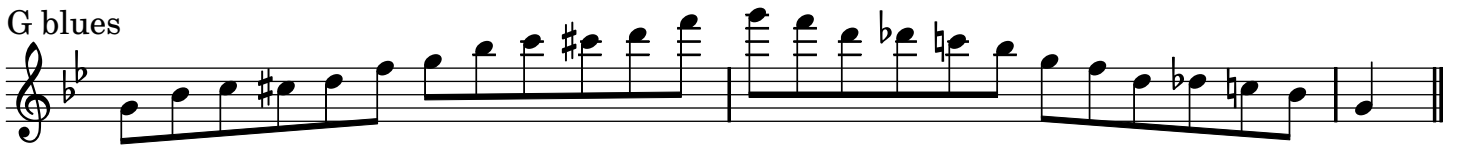
A blues



D blues



G blues



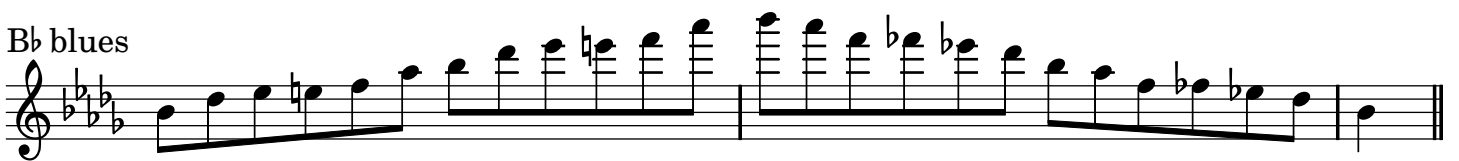
C blues



F blues



Bb blues



Eb blues



Ab blues



A# blues

Musical notation for A# blues scale in treble clef. The key signature has five sharps (F#, C#, G#, D#, A#). The scale is written across two staves. The first staff contains the notes A#, B, C#, D, E, F#, G, A. The second staff contains the notes A, B, C, D, E, F, G, A. There are two 'x' marks above the C# note in the first staff and the C note in the second staff, indicating a bent note.

D# blues

Musical notation for D# blues scale in treble clef. The key signature has five sharps (F#, C#, G#, D#, A#). The scale is written across two staves. The first staff contains the notes D#, E, F#, G, A, B, C#, D. The second staff contains the notes D, E, F, G, A, B, C, D. There are two 'x' marks above the F# note in the first staff and the F note in the second staff, indicating a bent note.

G# blues

Musical notation for G# blues scale in treble clef. The key signature has five sharps (F#, C#, G#, D#, A#). The scale is written across two staves. The first staff contains the notes G#, A, B, C#, D, E, F#, G. The second staff contains the notes G, A, B, C, D, E, F, G. There are two 'x' marks above the B note in the first staff and the B note in the second staff, indicating a bent note.

C# blues

Musical notation for C# blues scale in treble clef. The key signature has five sharps (F#, C#, G#, D#, A#). The scale is written across two staves. The first staff contains the notes C#, D, E, F#, G, A, B, C#. The second staff contains the notes C, D, E, F, G, A, B, C. There are two 'x' marks above the E note in the first staff and the E note in the second staff, indicating a bent note.

F# blues

Musical notation for F# blues scale in treble clef. The key signature has two sharps (F#, C#). The scale is written across two staves. The first staff contains the notes F#, G, A, B, C, D, E, F#. The second staff contains the notes F, G, A, B, C, D, E, F. There are two 'x' marks above the A note in the first staff and the A note in the second staff, indicating a bent note.

B blues

Musical notation for B blues scale in treble clef. The key signature has two sharps (F#, C#). The scale is written across two staves. The first staff contains the notes B, C, D, E, F#, G, A, B. The second staff contains the notes B, C, D, E, F, G, A, B. There are two 'x' marks above the E note in the first staff and the E note in the second staff, indicating a bent note.

E blues

Musical notation for E blues scale in treble clef. The key signature has one sharp (F#). The scale is written across two staves. The first staff contains the notes E, F, G, A, B, C, D, E. The second staff contains the notes E, F, G, A, B, C, D, E. There are two 'x' marks above the G note in the first staff and the G note in the second staff, indicating a bent note.