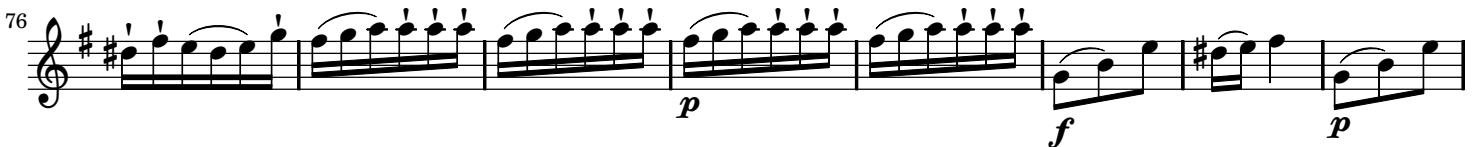


Vivace

from Sonata No. 5 in E minor

Johann Joachim Quantz (1697–1773)
QV 1:77

Vivace (♩ = 66)



Vivace

from Sonata No. 5 in E minor

Johann Joachim Quantz (1697–1773)
QV 1:77

Vivace (♩ = 66)

Measures 1-8 of the piece. The music is in 3/8 time with a key signature of one sharp (F#). The melody in the treble clef features eighth-note patterns and trills. The bass clef provides a simple accompaniment.

Measures 9-16. Measures 11 and 12 contain trills (tr.) in the treble clef. The piece concludes with a fermata in both staves.

Measures 17-23. Measures 17-21 feature a sixteenth-note arpeggiated pattern in the treble clef. The piece ends with a piano (*p*) dynamic marking in both staves.

Measures 24-30. The treble clef has a dynamic of *f* (forte) in measures 24 and 28, and *p* (piano) in measures 25 and 29. The bass clef has a dynamic of *f* in measures 24 and 28, and *p* in measures 25 and 29.

Measures 31-39. Measures 31 and 35 contain trills (tr.) in the treble clef. The piece features a repeat sign with first and second endings. Dynamics of *p* and *f* are indicated.

Measures 40-47. The piece concludes with a piano (*p*) dynamic marking in both staves.

48

48

f

f

55

55

f

62

62

f

70

70

f

77

77

p

f

p

84

84

p

f