

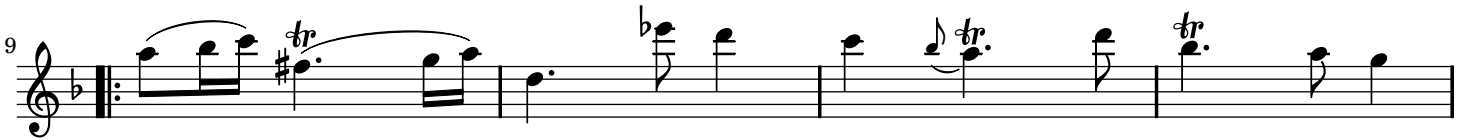
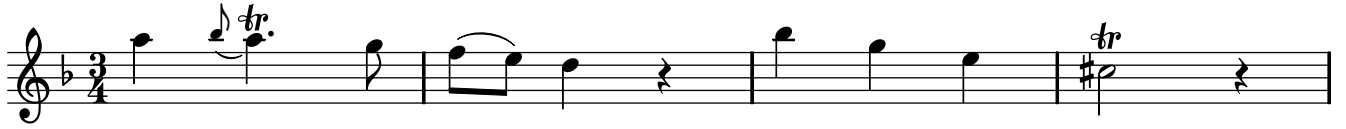
# Largo

from Sonata No. 1 in F major

Georg Philipp Telemann (1681–1767)

TWV 41:F2

Largo (♩ = 52)



# Largo

from Sonata No. 1 in F major

Georg Philipp Telemann (1681–1767)

TWV 41:F2

Largo (♩ = 52)

Measures 1-4 of the Largo movement. The score is in F major (one flat) and 3/4 time. The tempo is Largo, with a quarter note equal to 52 beats. The first system consists of a single treble clef staff for the flute and a grand staff (treble and bass clefs) for the piano accompaniment. The flute part begins with a trill on G4, followed by a melodic line. The piano accompaniment features a steady bass line and chords in the right hand.

Measures 5-8 of the Largo movement. The flute part continues with a melodic line and trills. The piano accompaniment provides harmonic support with chords and a consistent bass line. Measure 8 ends with a repeat sign.

Measures 9-12 of the Largo movement. The flute part features a melodic line with trills and a half-note rest in measure 10. The piano accompaniment continues with chords and a steady bass line. Measure 12 ends with a repeat sign.

Measures 13-16 of the Largo movement. The flute part continues with a melodic line and trills. The piano accompaniment provides harmonic support with chords and a consistent bass line. Measure 16 ends with a repeat sign.