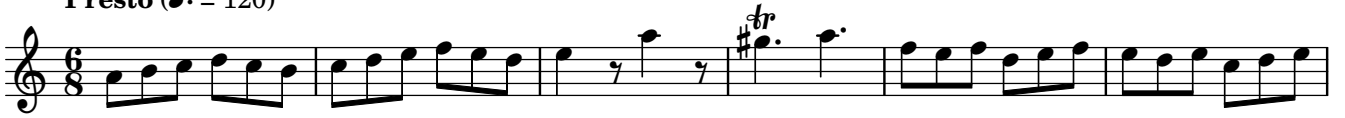


### III. Giga from Flute Sonata in A minor

Johann Joachim Quantz (1697–1773)  
QV 1:149

Presto (♩. = 120)



67

73

79

85

91

98

105

112

119

125

132

### III. Giga from Flute Sonata in A minor

Johann Joachim Quantz (1697–1773)  
QV 1:149

Presto (♩ = 120)

Measures 1-6 of the Giga. The piece is in 6/8 time and A minor. The flute part features a rhythmic pattern of eighth notes and quarter notes, with a trill on the third measure. The bass line consists of quarter notes.

Measures 7-13. Measure 7 begins with a piano (*p*) dynamic. The flute part continues with eighth-note patterns and a trill. The bass line has quarter notes, with a sharp sign indicating a change in the key signature.

Measures 14-19. Measure 14 features a trill. The flute part has eighth-note patterns, and the bass line has quarter notes with a sharp sign.

Measures 20-25. The flute part continues with eighth-note patterns, and the bass line has quarter notes with rests.

Measures 26-32. The flute part features eighth-note patterns, and the bass line has quarter notes with rests.

Measures 33-38. The flute part continues with eighth-note patterns, and the bass line has quarter notes.

39

Measures 39-45. Treble clef. Measure 39 starts with a piano (*p*) dynamic. Measures 40-45 feature a melodic line in the treble with a crescendo leading to a forte (*f*) dynamic. The bass line provides a steady accompaniment.

46

Measures 46-52. Treble clef. Measure 46 includes a trill (*tr.*) on the final note. A repeat sign is present at the end of measure 48. The piece concludes with a trill on the final note of measure 52.

53

Measures 53-59. Treble clef. Measures 53-59 consist of a continuous eighth-note melodic pattern in the treble, supported by a bass line.

60

Measures 60-66. Treble clef. Measure 60 begins with a trill (*tr.*). The melodic line in the treble features various intervals and dynamics, including a trill in measure 64. The bass line continues with a steady accompaniment.

67

Measures 67-72. Treble clef. Measure 67 starts with a flat (*b*) in the treble. The melodic line in the treble is characterized by a series of eighth-note patterns with various accidentals. The bass line provides a consistent accompaniment.

73

Measures 73-78. Treble clef. Measures 73-78 feature a melodic line in the treble with a series of eighth-note patterns and various accidentals. The bass line continues with a steady accompaniment.

79

Measures 79-84. Treble clef. Measures 79-84 consist of a melodic line in the treble with eighth-note patterns and various accidentals. The bass line provides a steady accompaniment.

85

Measures 85-90. Treble clef. Measures 85-90 feature a melodic line in the treble with eighth-note patterns and various accidentals. The bass line continues with a steady accompaniment.

91

91

*p* *f*

This system contains measures 91 through 97. The music is written for piano in a key with one sharp (F#). The right hand features a melodic line with eighth-note patterns and some rests, while the left hand provides a steady accompaniment of quarter notes. Dynamic markings include *p* (piano) and *f* (forte).

98

98

*p* *f*

This system contains measures 98 through 104. The right hand continues with eighth-note patterns, ending with a fermata. The left hand maintains a consistent accompaniment. Dynamic markings include *p* and *f*.

105

105

*p* *f* *tr*

This system contains measures 105 through 111. The right hand has a melodic line with a trill (tr) in measure 108. The left hand has a few rests in the first measure. Dynamic markings include *p*, *f*, and *tr*.

112

112

This system contains measures 112 through 118. The right hand features a melodic line with eighth-note patterns. The left hand provides a steady accompaniment.

119

119

This system contains measures 119 through 124. The right hand continues with eighth-note patterns. The left hand has a few rests.

125

125

*p*

This system contains measures 125 through 131. The right hand has a melodic line with eighth-note patterns. The left hand provides a steady accompaniment. A dynamic marking of *p* is present.

132

132

*f*

This system contains measures 132 through 138. The right hand features a melodic line with eighth-note patterns. The left hand provides a steady accompaniment. A dynamic marking of *f* is present. The system ends with a double bar line and repeat dots.