

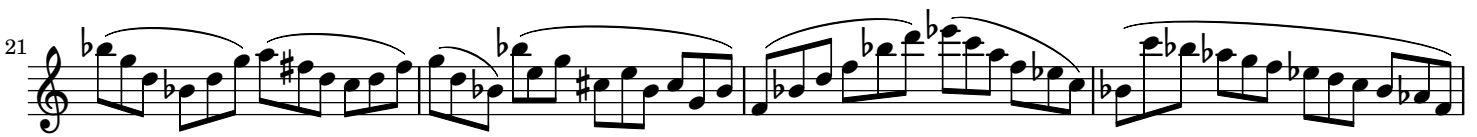
Nº 1

from 24 Etüden zur Förderung der Technik

Emil Prill (1867–1940)

Op. 12

Allegro moderato (♩ = 108)



31 Musical staff 31: Treble clef, key signature of one flat (Bb), starting with a Bb. The staff contains a series of eighth notes with various accidentals (flats and naturals) and some beamed sixteenth notes. A slur covers the first two measures.

34 Musical staff 34: Treble clef, key signature of one flat (Bb), starting with a Bb. The staff continues with eighth notes and some beamed sixteenth notes. A slur covers the first two measures. The staff ends with a double bar line and a key signature change to three sharps (F#, C#, G#).

37 Musical staff 37: Treble clef, key signature of three sharps (F#, C#, G#), starting with an F#. The staff contains eighth notes with some accidentals and beamed sixteenth notes. A slur covers the first two measures.

41 Musical staff 41: Treble clef, key signature of three sharps (F#, C#, G#), starting with an F#. The staff continues with eighth notes and beamed sixteenth notes. A slur covers the first two measures.

45 Musical staff 45: Treble clef, key signature of one sharp (F#), starting with an F#. The staff contains eighth notes with beamed sixteenth notes. A slur covers the first two measures.

49 Musical staff 49: Treble clef, key signature of one sharp (F#), starting with an F#. The staff contains eighth notes with beamed sixteenth notes. A slur covers the first two measures.

53 Musical staff 53: Treble clef, key signature of one sharp (F#), starting with an F#. The staff contains eighth notes with beamed sixteenth notes. A slur covers the first two measures.

57 Musical staff 57: Treble clef, key signature of one sharp (F#), starting with an F#. The staff contains eighth notes with beamed sixteenth notes. A slur covers the first two measures.

61 Musical staff 61: Treble clef, key signature of one sharp (F#), starting with an F#. The staff contains eighth notes with beamed sixteenth notes. A slur covers the first two measures.

65 Musical staff 65: Treble clef, key signature of one sharp (F#), starting with an F#. The staff contains eighth notes with beamed sixteenth notes. A slur covers the first two measures. The staff ends with a double bar line and a fermata over the final note.