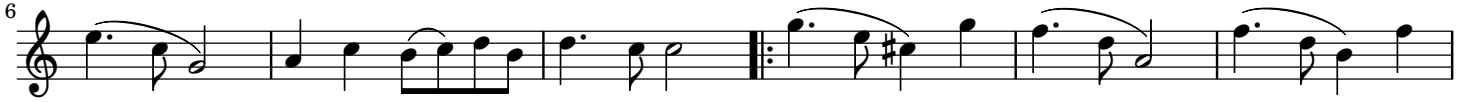


Simple Song

Peter Pope (1944—)

Moderato (♩ = 108)



Simple Song

Peter Pope (1944—)

Moderato (♩ = 108)

Flute

Guitar

Measures 1-4 of the score. The flute part features a melody of quarter notes with slurs. The guitar part provides a rhythmic accompaniment with eighth notes and chords. The key signature is C major and the time signature is common time (C).

Measures 5-8 of the score. The flute part continues with a similar melodic line. The guitar part maintains the accompaniment pattern.

Measures 9-12 of the score. A key signature change to D major is indicated by a sharp sign on the F line of the guitar staff. The flute part has a repeat sign at the beginning of measure 9.

Measures 13-16 of the score. The flute part concludes with a melodic phrase. The guitar part ends with a final chord. The piece concludes with a double bar line.