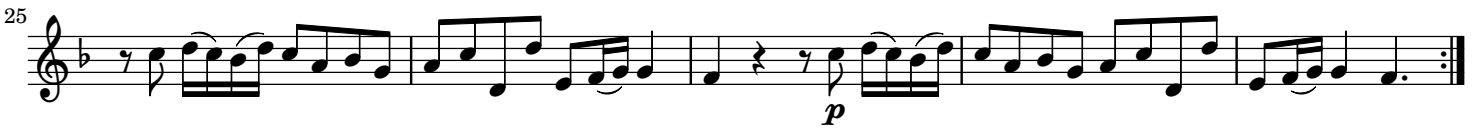


II. Allemanda

from Violin Sonata No. 10 in F major

Arcangelo Corelli (1653–1713)
Op. 5, No. 10

Allegro (♩ = 96)



II. Allemanda

from Violin Sonata No. 10 in F major

Arcangelo Corelli (1653–1713)
Op. 5, No. 10

Allegro (♩ = 96)

The first system of the Allemanda consists of three measures. The upper staff (flute) begins with a quarter rest, followed by a series of eighth and sixteenth notes. The piano accompaniment features a steady eighth-note bass line in the left hand and chords in the right hand.

The second system contains measures 4, 5, and 6. The flute part continues with eighth-note patterns. The piano accompaniment maintains its rhythmic accompaniment with chords and moving lines in both hands.

The third system covers measures 7, 8, and 9. The flute part shows more melodic development. The piano accompaniment provides harmonic support with consistent rhythmic patterns.

The fourth system includes measures 10, 11, and 12, which conclude the piece. The flute part ends with a final melodic phrase, and the piano accompaniment provides a concluding harmonic structure.



Musical score system 1, measures 1-3. The system consists of three staves: a single treble staff at the top and a grand staff (treble and bass) below. The key signature has one flat (B-flat). The melody in the top staff features eighth notes with rests. The piano accompaniment in the grand staff includes chords and moving lines in both hands.



Musical score system 2, measures 17-19. The system consists of three staves: a single treble staff at the top and a grand staff (treble and bass) below. The key signature has one flat. The melody in the top staff continues with eighth notes. The piano accompaniment in the grand staff features more complex rhythmic patterns and chordal textures.



Musical score system 3, measures 20-22. The system consists of three staves: a single treble staff at the top and a grand staff (treble and bass) below. The key signature has one flat. The melody in the top staff has some rests. The piano accompaniment in the grand staff includes sixteenth-note passages in the bass line.



Musical score system 4, measures 23-25. The system consists of three staves: a single treble staff at the top and a grand staff (treble and bass) below. The key signature has one flat. The melody in the top staff includes some rests. The piano accompaniment in the grand staff features sixteenth-note runs in the bass line.



Musical score system 5, measures 26-29. The system consists of three staves: a single treble staff at the top and a grand staff (treble and bass) below. The key signature has one flat. The melody in the top staff ends with a double bar line. The piano accompaniment in the grand staff concludes with a final chord. Dynamics markings 'p' (piano) are present in measures 27 and 28.