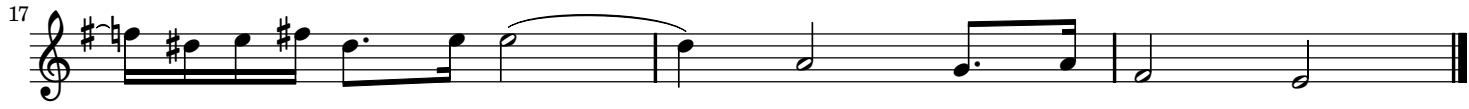
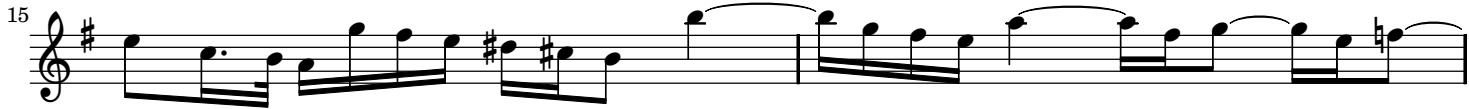


# I. Grave

from *Trattenimenti armonici*, Sonata No. 8 in E minor

Tomaso Albinoni (1671–1751)  
Op. 6, No. 8

Grave (♩ = 48)



# I. Grave

from *Trattenimenti armonici*, Sonata No. 8 in E minor

Tomaso Albinoni (1671–1751)  
Op. 6, No. 8

Grave (♩ = 48)

Measures 1-3 of the piece. The music is in E minor, 3/4 time. The tempo is Grave (♩ = 48). The key signature has one sharp (F#). The melody in the treble clef starts with a quarter note G4, followed by eighth notes A4, B4, and C5. The bass line starts with a quarter note G3, followed by eighth notes A3, B3, and C4.

Measures 4-6 of the piece. The melody continues with eighth notes and quarter notes, featuring a trill-like figure in measure 5. The bass line provides a steady accompaniment with eighth and quarter notes.

Measures 7-9 of the piece. The melody features a long, flowing line with slurs and ties, moving across the staff. The bass line continues with a similar rhythmic pattern.

Measures 10-12 of the piece. The melody has a more active feel with eighth and sixteenth notes. The bass line remains consistent with the previous measures.

Measures 13-15 of the piece. The melody becomes more complex with sixteenth notes and slurs. The bass line continues to support the melody.

Measures 16-18 of the piece. The melody concludes with a series of quarter notes and a final cadence. The bass line ends with a few more notes, including a double bar line.