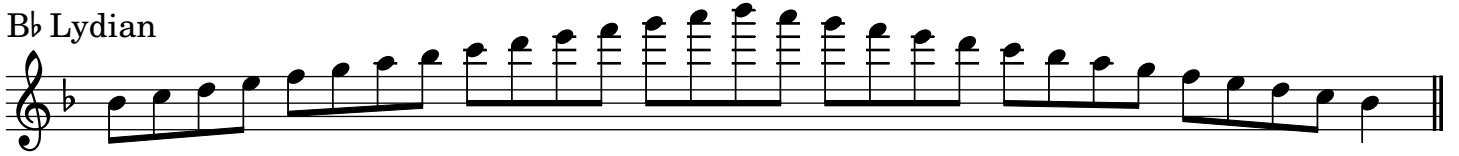


# Lydian Scales

F Lydian



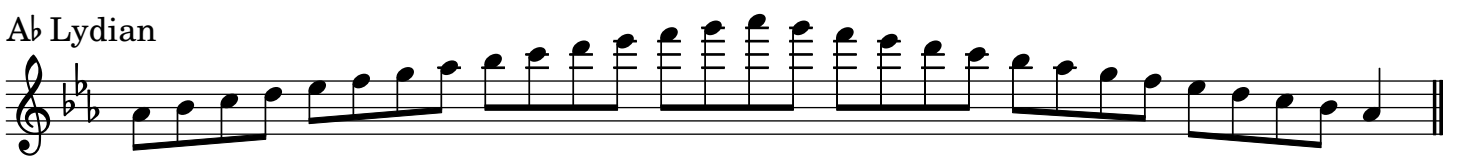
Bb Lydian



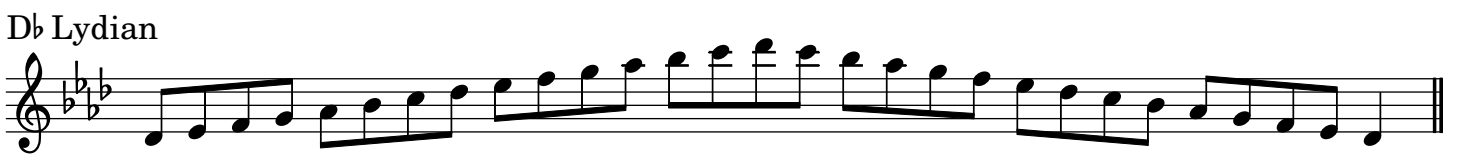
Eb Lydian



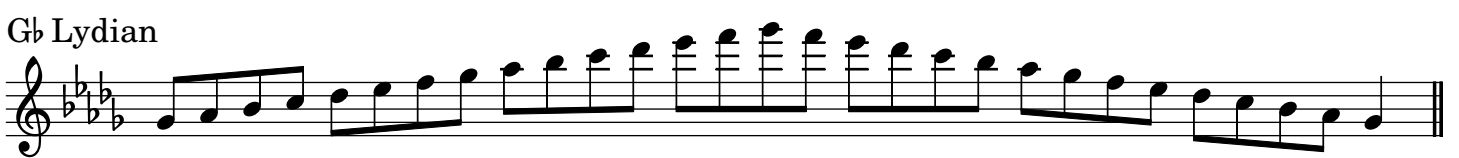
Ab Lydian



Db Lydian



Gb Lydian



Cb Lydian



Fb Lydian



F# Lydian

Musical notation for the F# Lydian scale in treble clef. The key signature has four sharps (F#, C#, G#, D#). The scale is written as a single melodic line with a double bar line at the end.

B Lydian

Musical notation for the B Lydian scale in treble clef. The key signature has five sharps (F#, C#, G#, D#, A#). The scale is written as a single melodic line with a double bar line at the end.

E Lydian

Musical notation for the E Lydian scale in treble clef. The key signature has three sharps (F#, C#, G#). The scale is written as a single melodic line with a double bar line at the end.

A Lydian

Musical notation for the A Lydian scale in treble clef. The key signature has two sharps (F#, C#). The scale is written as a single melodic line with a double bar line at the end.

D Lydian

Musical notation for the D Lydian scale in treble clef. The key signature has two sharps (F#, C#). The scale is written as a single melodic line with a double bar line at the end.

G Lydian

Musical notation for the G Lydian scale in treble clef. The key signature has one sharp (F#). The scale is written as a single melodic line with a double bar line at the end.

C Lydian

Musical notation for the C Lydian scale in treble clef. The key signature has no sharps or flats. The scale is written as a single melodic line with a double bar line at the end.